

Support Center

What Do You Need?

[Support Center Home](#)

[Internet Access Numbers](#)

[Network Status](#)

[Download Center](#)

Contact Us



[Contact Us By Email](#)

Get help w ithin 24 hours.



[Contact Us By Live Chat](#)

Help in an instant!



[Contact Us By Phone](#)

Talk to a live person.



[Network Trouble Report](#)

Report Netw ork Issues.

My Account

View and change your account info:

- Change billing & payment info
- Add/change an email address
- Change passw ord
- View your invoice
- Upgrade service
- and more...

[Go to My Account now!](#)

Configure Windows 95 Dial-Up Networking

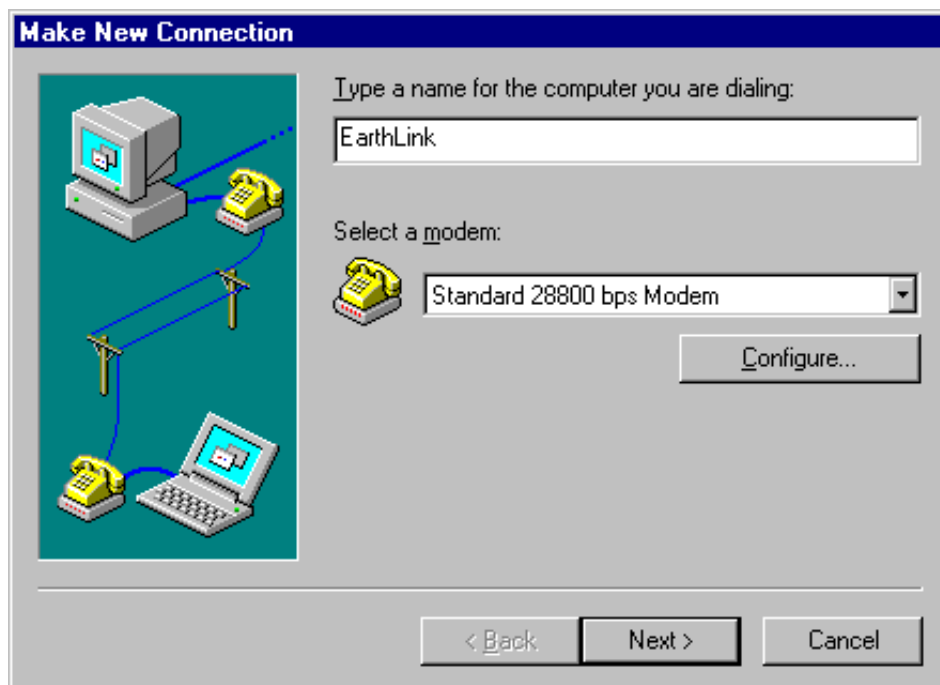


- **Operating System:** Windows 95
- **Application:** Dial-Up Networking

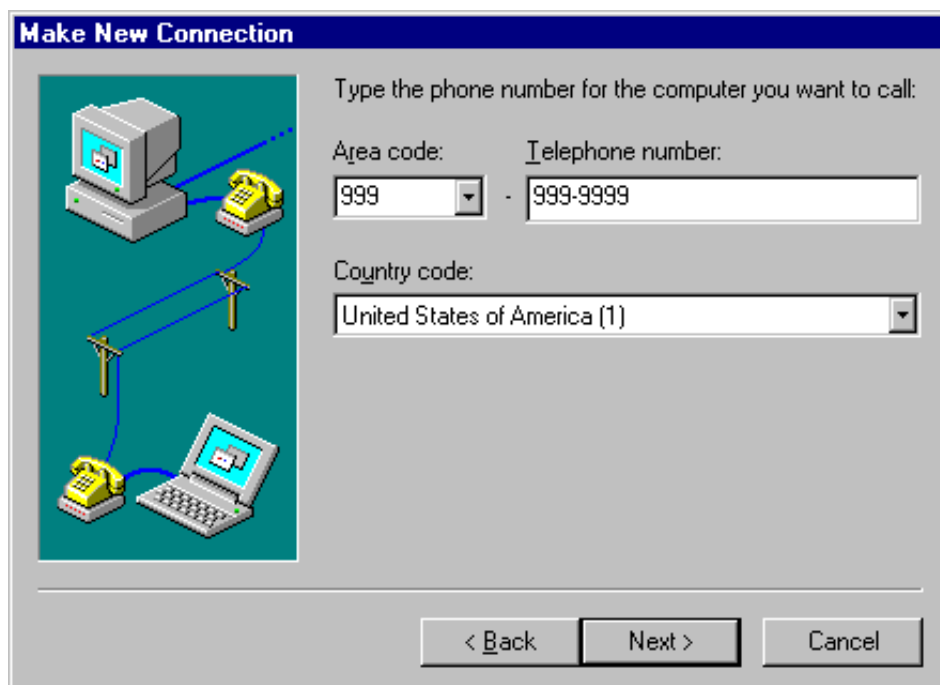
1. Click the **Start** button point to **Settings** and choose **Control Panel**.
2. Click the **Network** icon.
3. Click the **IPX/SPX-compatible Protocol** component.
4. Click the **Remove** button.
5. Click the **NetBEUI** component.
6. Click the **Remove** button.
7. Click the **Add** button.
8. Click the **Protocol** component.
9. Click the **Add** button.
10. Click **Microsoft** under **Manufacturers**.
11. Click **TCP/IP** under **Network Protocols**.
12. Click the **OK** button.
13. Click the **Add** button.
14. Click **Client**.
15. Click the **Add** button.
16. Click **Microsoft** under **Manufacturers**.
17. Click the **OK** button.
18. You should now have only three network components: **Client for Microsoft Networks, Dial-Up Adapter**, and **TCP/IP**.
19. Click the **Dial-Up Adapter** Component.
20. Click the **Properties** button.
21. Click the **Advanced** tab.
22. Click **Use IPX header compression**.
23. In the **Value** field, click on the down arrow and select **No**.
24. Click the **OK** button.
25. Click the **Identifictation** tab.
26. In the **Computer name** text box, type your username in lower-case characters.
27. In the **Workgroup** text box, type **WORKGROUP**
28. Click the **OK** button.
29. When Windows 95 prompts you to restart the computer, click **OK**.
30. Wait for the computer to restart.

This may take a few minutes.

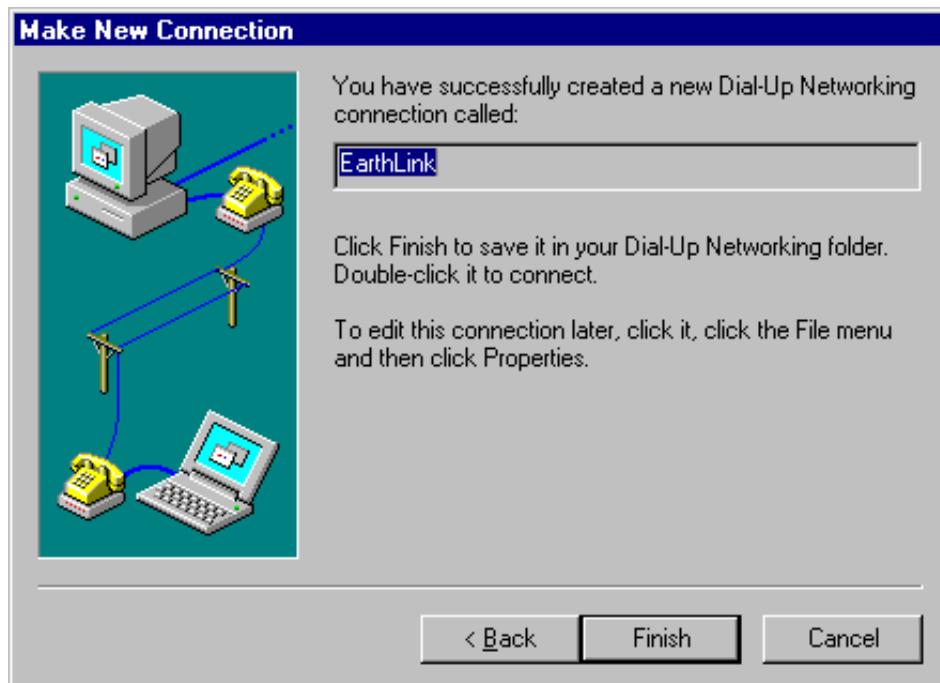
31. When you see the login prompt, click **OK** without entering a password. (This will ensure that you will not be prompted to login to your own computer again.
32. Close the **Control Panel** window.
33. Double-click the **Dial-Up Networking** icon in the **My Computer** window.
34. Double-click the **Make New Connection** icon.
35. Under **Type a name for the computer you are dialing** type **EarthLink**.
36. Click the **Configure** button.



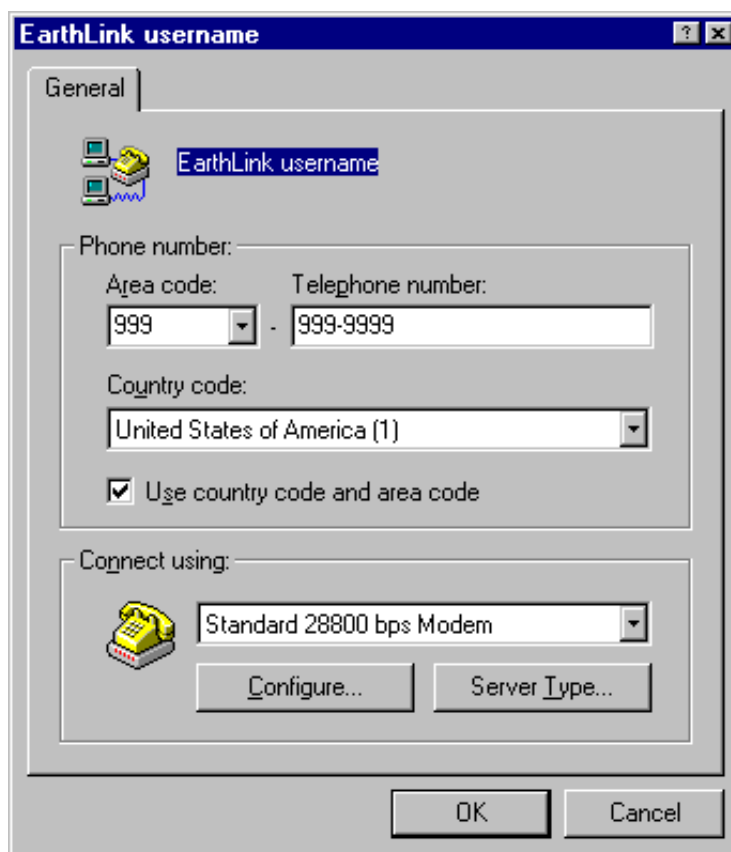
37. Check that the **Maximum speed** setting is correct for your modem (for 14.4 modems use **19200**, for 28.8 modems use **38400**.)
38. Make sure that **Only connect at this speed** is not checked. Click **OK**.
39. Click the **Next** button.
40. Determine which access number (POP) is local for you.
41. Type the area code and telephone numbers in the appropriate fields.
42. Click the **Next** button.



43. Click the **Finish** button.

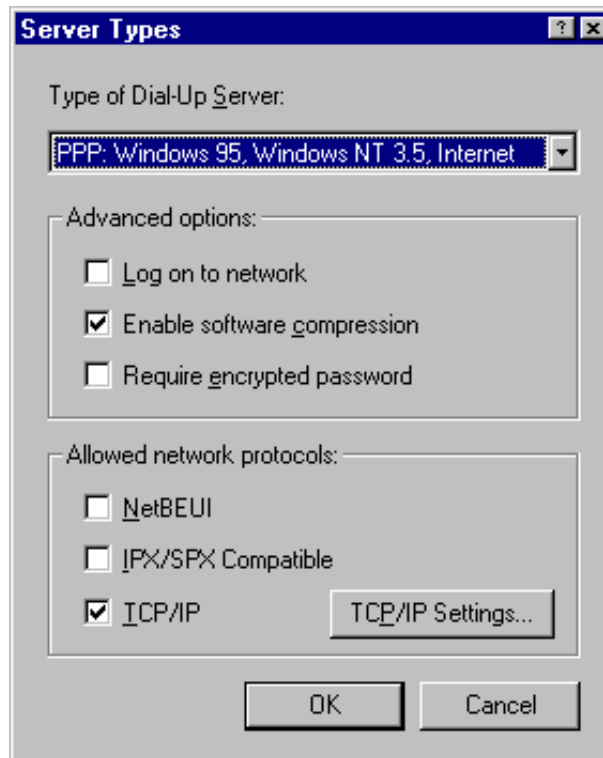


44. Click the **EarthLink** icon.
45. Click **File** from the menu bar.
46. Click **Properties**.
47. Click the **Server Type** button.

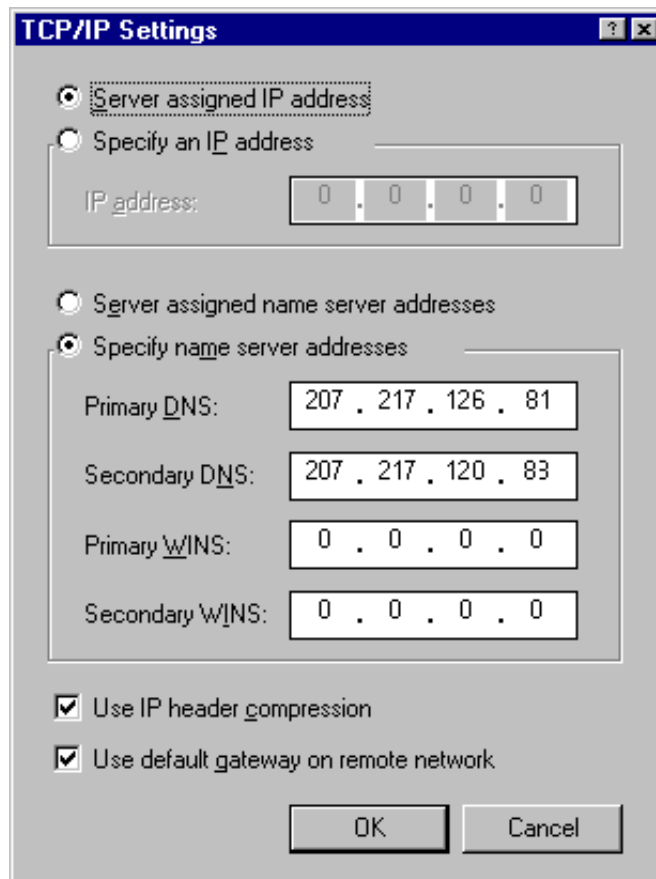


48. Uncheck **Log on to network**.
49. Check **Enable software compression**.
50. Uncheck **Require encrypted password**.
51. Uncheck **NetBEUI**.
52. Uncheck **IPX/SPX Compatible**.
53. Check **TCP/IP**.

54. Click the **TCP/IP Settings** button.



55. Select **Specify name server addresses**.
 56. In the **Primary DNS** text box, type **207.217.126.81**
 57. In the **Secondary DNS** text box, type **207.217.120.83**
 58. Click the **OK** button.



59. Click **OK** again.

60. Click **OK** one more time.



[Tech Support Chat](#)

Hours: 7 a.m. to 2:15 a.m. (EST), 7 days a week